

# VIPA-WS20

- LIVE PA ANNOUNCEMENT
- IMMEDIATE DVA MESSAGE BROADCAST
- AUTOMATED DVA MESSAGE BROADCAST
- BACKGROUND MUSIC
- FAULT MONITORING
- UP-TO 20 PA ZONES
- 2D BUTTON MATRIX GUI
- 23" TOUCHSCREEN



## OVERVIEW

The VIPA-WS20 is a stand-alone PC based Public Address Touchscreen GUI which provides both control and monitoring of an ASL Public Address (PA) or Voice Alarm (VA) system. The VIPA-WS20 is used as a graphic microphone display in conjunction with a separate microphone, such as an ASL MPS01 IP microphone (as shown above), or any other microphone from the ASL MPS range.

The VIPA-WS20 and MPS operate together as a paging microphone, with full integration between the desk microphone and graphic display. Thus the PA zones can be selected for a broadcast either on the graphic display or using physical microphone buttons, and the PTT can be Pressed To Talk either on the graphic display or on the microphone itself. The VIPA-WS20 also provides a background music routing function, controlling a music feed that is connected into the VIPA-WS20's analogue audio input.

The VIPA-WS20's Digital Voice Announcer functionality enables PA announcements to be made from recorded 'Digital Voice Announcer' (DVA) messages which are stored within the PC. As well as immediate broadcast functions, DVAs can be scheduled to be automatically broadcast at intervals, and new DVA messages can be recorded by the user.

Alternate chimes can be used, and the customer's own chimes can be loaded onto the unit as well.

The VIPA-WS20's simple and intuitive user interface enables easy and quick operation. The 2D display graphics use a standard .png image file, and normally either just show PA 'zone select' buttons, or show a customised site plan with the physical layout of the PA zones being shown on the screen. If a site plan image is shown then the area representing each zone acts as a 'zone select' button, with zone selection and announcement status being shown by different colours.

The VIPA-WS20 is based on an All-In-One PC and touchscreen monitor, together with mouse and keyboard. One or more VIPA-WS20 workstations can be used on a single PA system.

The VIPA-WS20's interface to the PA system is via a RJ45 Ethernet port. It is connected to an IP network, across which the PA audio is routed using ASL's VIPA Voice over IP technology.

The VIPA-WS20 will work with the whole ASL VIPA PA range, including the VIPEDIA IP Audio Router, and the iPAM400 IP PA Amplifier. The VIPA-WS20 can also operate with ASL VAR Routers and with third party systems via ASL VIPA-HOST IP interfaces.

Fault and status reporting is provided for the PA system, and is also provided for any third party equipment which has its fault or status contact outputs connected to the system.

1 ASL microphone supplied separately , microphones can have their own zone select buttons and can operate independently as well as with the VIPA-WS20

2 When fitted with the optional VIPEDIA-NET module

3 The functionality provided by the VIPA-WS20 is dependant on the connected PA equipment

## FUNCTIONALITY

The ASL iVENCS software suite as used by the VIPA-WS20 has the primary application of providing IP-based Public Address.

The VIPA-WS20's simple and intuitive user interface enables quick and easy operation, and the standard functionality includes the following:

- 2D Button matrix GUI
  - GUI Graphics supplied by the Customer as a .png image file
- PA Subsystem
  - Up-to 20 PA Zones shown graphically on the user Interface
  - Selection of PA zones for broadcast can be made directly on the GUI, or via user-programmed group zone selection buttons
  - All PA Zone activity and zone busy states are shown graphically on the GUI, with the priority of any broadcasting source shown by means of the displayed zone colour
  - DVA Message Broadcast Scheduling
    - Broadcast of time scheduled DVA announcements
    - Preview play of recorded announcements
    - Recording, review and storage of user Digital Voice Announcer (DVA) messages
  - Pre-Installation of DVA messages
    - An Emergency Evacuation message
    - An Emergency Alert message
    - Routine Operational and Security Messages
    - Messages can be either from the ASL Standard English language message library, or as supplied by the Customer
  - Ability to route a Background Music (BGM) source from the VIPA-WS20 to any PA zone
  - Global Control of the volume of the background music
- Monitoring and System Logs
  - PA System Status and Fault Monitoring
  - Alarm List, including standard ASL alarm priorities and descriptions
  - Event Log, showing all alarms and status changes
  - Broadcast log display and archive, including broadcast time, broadcast source and destination(s), plus live or

## SYSTEM CUSTOMISATION

recorded message flag, and with all message file names logged

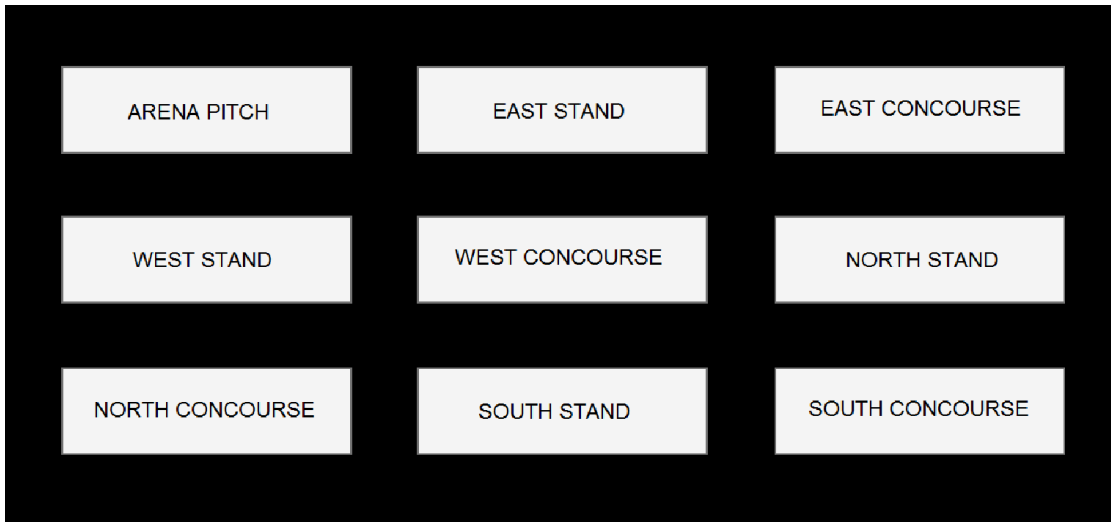
- PA System equipment status tree

The VIPA-WS20 can be customised to use alternate hardware or to provide numerous additional functions. Please contact ASL if you have any PA workstation requirements that are not met by the above list of standard functions. Typical functionality which can be supplied as custom options on the VIPA-WS20 is as follows:

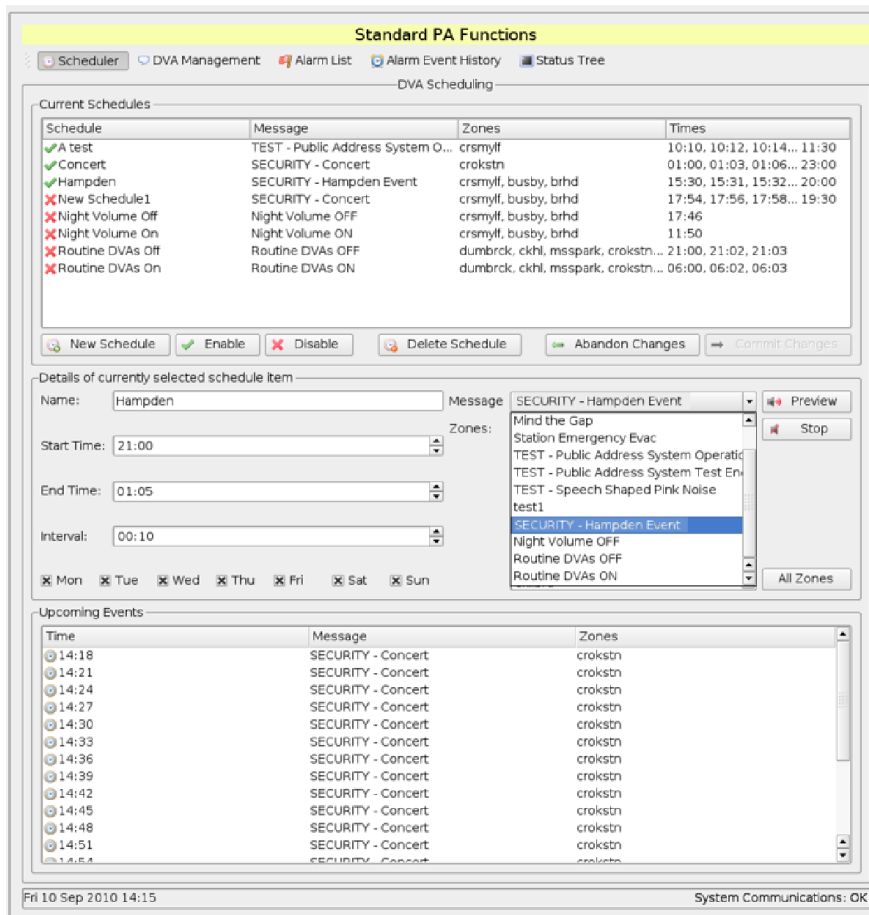
- Ability to listen in to the broadcasts being made in any PA zone
- Routing and volume control of multiple music sources
- Routing and volume control of multiple third party microphone inputs, such as entertainment radio microphones
- Control of the volume levels in individual PA zones
- Muting of routine advertising and security DVA messages into individual PA zones
- Multiple graphical GUI screens, to show different building floors or areas
- GPIO Contact provision, for status reporting and simple control of third party equipment

Other functionality is also available with a full upgrade into an iVENCS Control System workstation.

EXAMPLE GUI



Example button matrix



DVA Message Scheduler

## CONNECTIVITY

The VIPA-WS20's interface to the PA system is via a RJ45 Ethernet port. It is connected to an IP network, across which the PA audio is routed using ASL's VIPA Voice over IP technology.

The VIPA-WS20 will work with the whole ASL VIPA PA range, including the VIPEDIA IP Audio Router, and the iPAM400 IP PA Amplifier. The VIPA-WS20 can also operate with ASL VAR Routers and with third party systems via ASL VIPA-HOST IP interface units, or by using the VIPEDIA-12 as an audio and control interface unit:

- Full integration with ASL PA Equipment
  - Control any or all PA subsystems from any touchscreen / workstation on the network
  - Established VoIP PA System
    - Excellent Long Line PA performance
  - Voice Alarm Heritage
    - High reliability
    - Fully monitored audio signal path
    - High fault reporting
- Can also integrate with third party PA systems
  - Via ASL VIPA-HOST or VIPET IP interface units
  - Or directly, with the other PA equipment running the ASL VIPA SDK

The VIPA-WS20 is supplied as standard with a configuration which enables any of the following PA equipment to be connected:

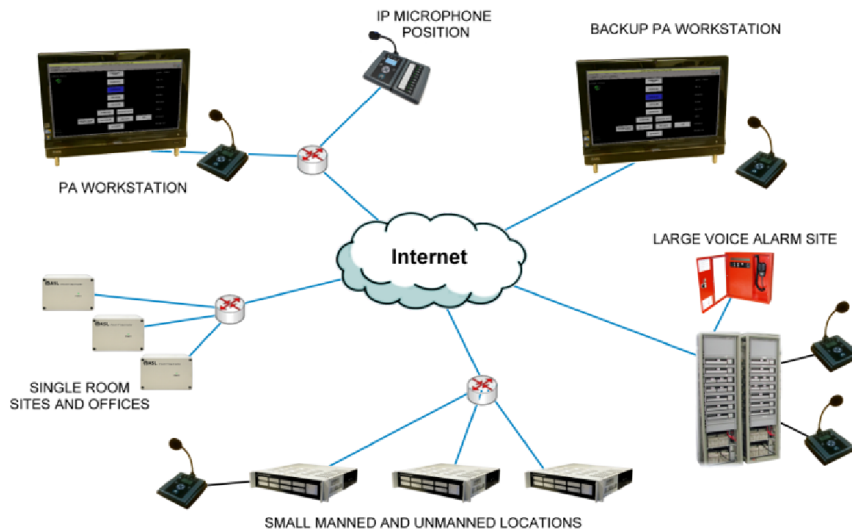
- Up to ten ASL iPAM400 IP Amplifier Mainframes, with up to four PA zones each.
- Up to five ASL VIPEDIA-12 IP Routers, (with VIPEDIA-NET), with up to twelve PA zones each.
- Up to five ASL VAR Routers connected via VIPA-HOST IP interface units, with up to twelve PA zones each.

Any other variations of ASL or third party PA equipment may be connected as options on the base VIPA-WS20 unit.

## NETWORK REQUIREMENTS

Please contact ASL if you have a requirement to connect to or control any other PA equipment or variations of the above.

Live voice audio is provided across the IP network to the PA equipment, with the audio being sent using UDP multicast with a stream of data, and network transmission



streaming is provided across the IP network to the PA equipment, with the audio being sent using standard IPv4 IGMPv3. The use of multicast transmissions allows for a single stream to be received by multiple destinations thus minimising the transmission bandwidth.

Example IP PA Network

**SPECIFICATION**
**Connection to IP Network**

Connection to IP Network ..... 100BASE-T Ethernet  
 Audio ..... VoIP audio

**Live Announcement**

Default Maximum Microphone Broadcast Length ..... 60 s

**DVA Message**

Default Maximum Message Length ..... 60 s  
 Pre-Recorded DVA Message Format (Preferred)  
   File Format ..... WAV  
   Sample Rate ..... 48 kHz  
   Bit Depth ..... 16 bits

**Graphic Zone Image File Format**

File Format ..... PNG  
 Image Size ..... 960 pixels wide \* 640 pixels high

**Touchscreen PC (Standard DVA02 hardware)**

LCD ..... 23 inch 1920\*1080 widescreen Touchscreen TFT display  
 Power Supply ..... 100-240 V AC  
 LAN ..... 1 off 10/100BASE-T

**PRODUCT PART NUMBERS**

VIPA-WS20 ..... iVENCs Public Address Control Workstation

**OPTION PART NUMBERS**

VIPA-TTS-EN ..... English Language Text to Speech system (Installed Option)

The functionality which is available in any one installation depends on the connections used and on the other equipment used in that installation.