

## EN54 CEILING SPEAKER

- 6W 100V LOUDSPEAKER
- SIZE 6.5" (165MM)
- MOUNTS BEHIND PERFORATED CEILING PANELS
- EXCELLENT SOUND QUALITY
- FULLY CERTIFIED TO EN54-24



### OVERVIEW

The SPCG-06W-65-EN54 is a 6W 100V grid mount ceiling loudspeaker, which has a 6.5" (165mm) full-range chassis providing excellent sound quality with speech and background music, and which is certified to EN54-24. The speaker is fitted with a 100V transformer which has three power adjustment tapings of 6W, 3W and 1.5W.

The SPCG-06W-65-EN54 is designed to be mounted behind perforated ceiling panels, with the speaker's front panel having adhesive corners for increased stability. The speaker is ingress protection rated to IP21C.

The 100V loudspeaker line cabling is connected by means of a four pin screw terminal. For additional reliability a thermal fuse is provided and the speaker chassis is damp-resistant.

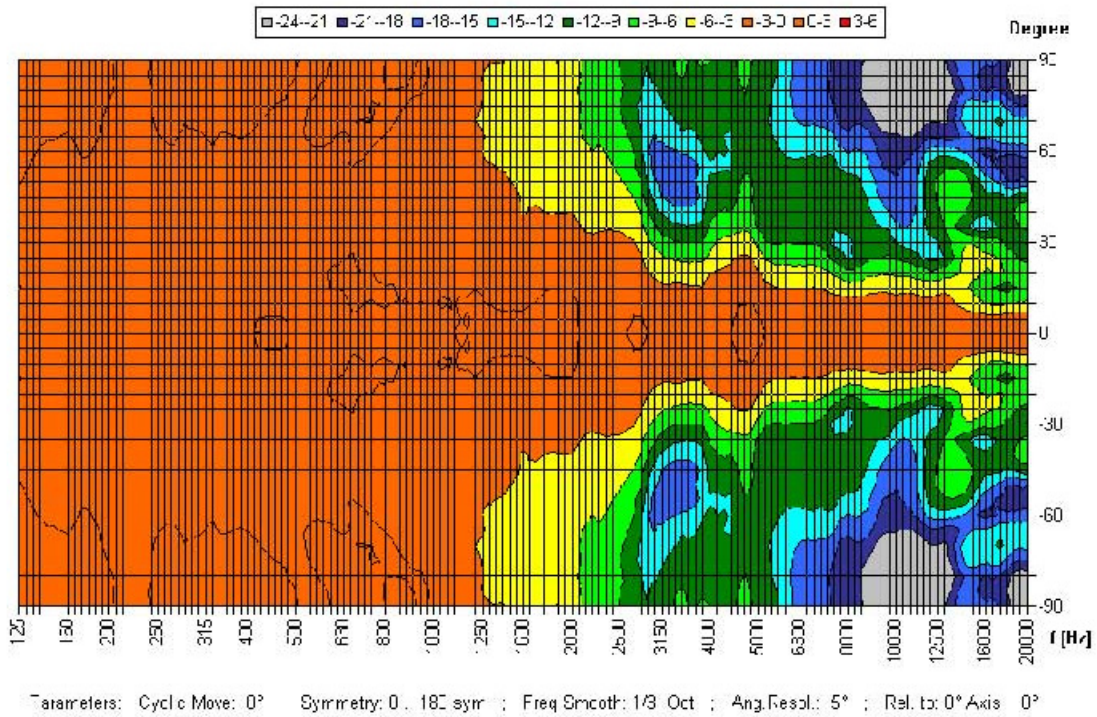
The loudspeaker is optionally available with a DC blocking capacitor fitted, in order to provide compatibility with DC loudspeaker line monitoring systems. The part number for this DC monitoring compatible version is SPCG-06W-65-EN54-DC.

EASE data is available for this speaker on request.

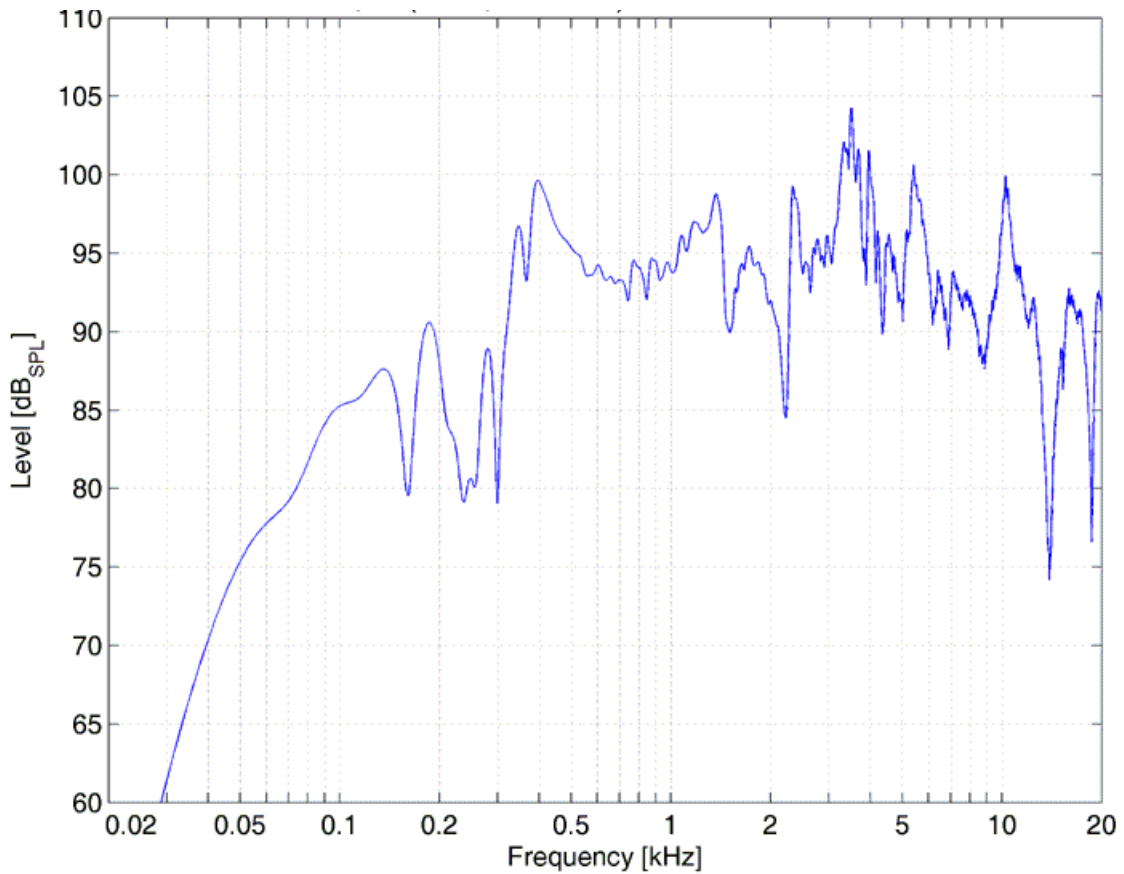
**PRODUCT ATTRIBUTES**

Power Tappings	6W / 3W / 1.5W
Frequency Range	272 – 23,700 Hz
Frequency Response	106 – 23,500 Hz
SPL 1W / 1m, peak	99.5 dB
SPL 1W / 4m, peak	87.5 dB
SPL Pmax / 4m, peak	95.2 dB
Sensitivity EN54-24, 1W / 4m	80.1 dB
Dispersion (-6dB, 500Hz)	180° (horizontal) 180° (vertical)
Dispersion (-6dB, 1KHz)	180° (horizontal) 180° (vertical)
Dispersion (-6dB, 2KHz)	180° (horizontal) 180° (vertical)
Dispersion (-6dB, 4KHz)	52° (horizontal) 52° (vertical)
Temperature Range	-20 / +80 °C
Dimensions	200 x 300 x 77 mm
Weight (net)	1.65 kg
Colour	Black
Connector	4-pin screw terminal
Mounting	Face-down ceiling grid
IP Rating	IP21
Packing Unit	8

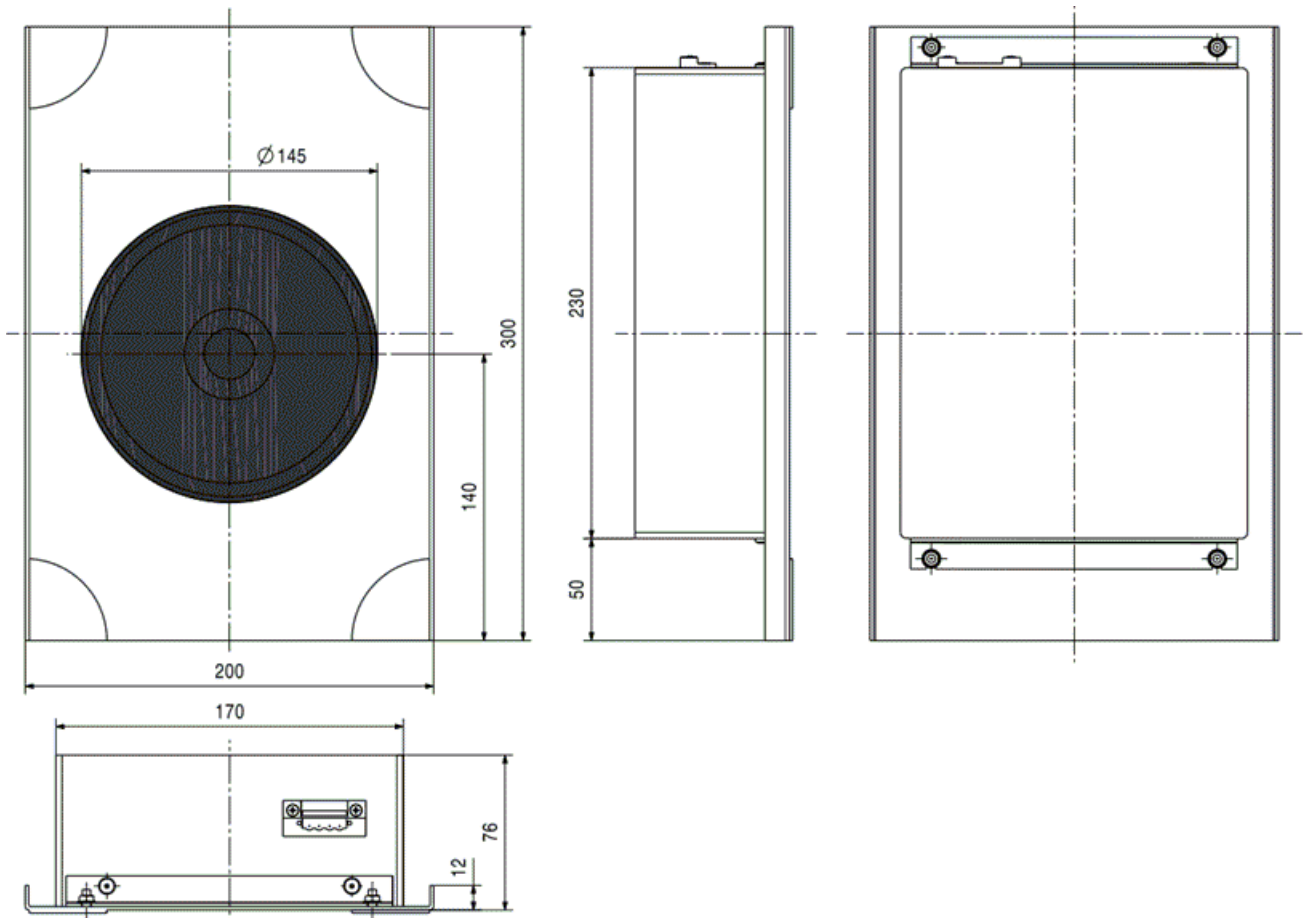
POLAR DIAGRAM



FREQUENCY RESPONSE DIAGRAM



**DIMENSIONAL DIAGRAM**



Measurements according to DIN EC 268-5

RoHS complaint (2011/65/EU)



This equipment is designed and manufactured to conform to the following EC standards:  
 EMC: EN55103-1/E1, EN55103-2/E5, EN50121-4, ENV50204  
 Safety: EN60065

Manufacturer

Application Solutions (Safety and Security) Limited  
 Unit 17 - Cliffe Industrial Estate - Lewes - East Sussex - BN8 6JL - U.K.  
 Tel: +44(0)1273 405411

[www.asl-control.co.uk](http://www.asl-control.co.uk)

All rights reserved.

Information contained in this document is believed to be accurate, however no representation or warranty is given and Application Solutions (Safety and Security) Limited assumes no liability with respect to the accuracy of such information.

