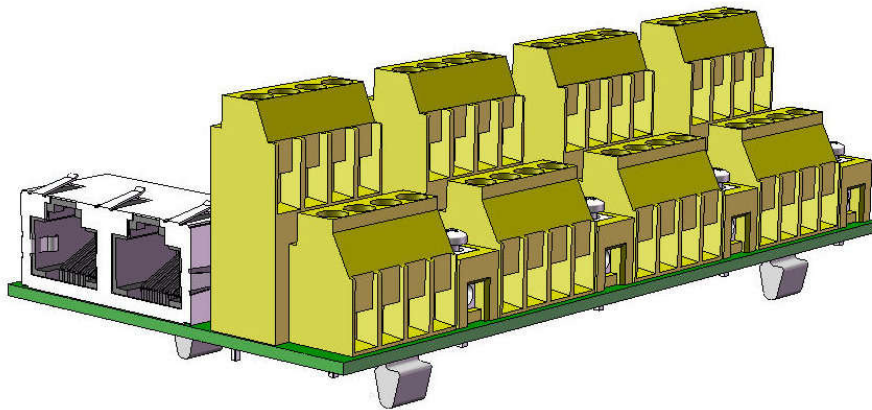
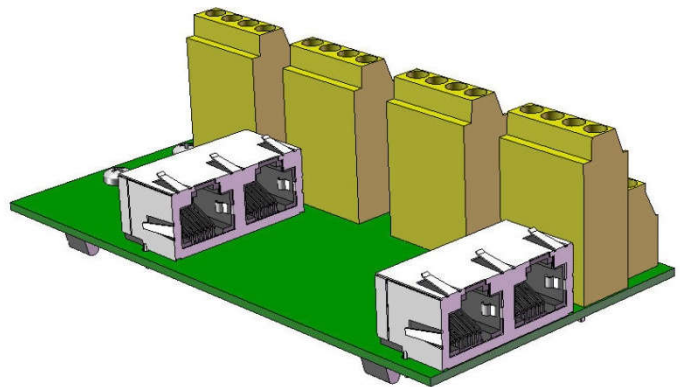


BOA02

RJ45 Break Out Adaptor - Four Port - Straight Through



- DIN rail mount
- Break out of all of the connections from four RJ45 ports, each to eight screw terminals plus an output cable screen terminal
- Cost effective straight-through RJ45 connection breakout



The BOA02 is a simple Quad DIN Rail mount RJ45 cable Break Out Adaptor, which can be used to provide connections from non-RJ45 installation wiring to ASL VIPEDIA-12 IP Audio routers, and to similar equipment with RJ45 connections.

The BOA02 has four RJ45 I/O ports and four blocks of eight terminals, plus four screen terminals. The four pairs of signals from each RJ45 port are each taken to a pair of terminals on one of the terminal blocks, and each terminal block has an associated screen connection which is taken to the RJ45 connector's screen.

Datasheet

ASL BREAK OUT ADAPTOR OPTIONS

ASL have two Break Out Adaptors which are suitable for use with the VIPEDIA-12 IP Audio Router, the BOA02, as described in this Datasheet, and a more versatile single way adaptor, the BOA01.

SPECIFICATION

RJ45 Connectivity

I/O Connection Ports..... 4
Screened RJ45 8 way
All four pairs of RJ45 signals taken to individual I/O Signal Terminal Pairs
The Audio signals pairs to each of the four VIPEDIA-12 Audio Input Ports are connected to a pair of I/O Terminals each
The connector screen is taken to the appropriate screen terminal

I/O Terminal Connectivity

Terminal Blocks..... 4 eight way terminal blocks, one per RJ45 I/O connection port
One terminal block plus one cable screen terminal per RJ45 port
I/O Terminals per RJ45 port..... 8 Signal Terminals in four pairs, one pair for each twisted pair in the RJ45 cable
Lower Row of I/O Terminals 4 Signal Terminals, as two pairs
Upper Row of I/O Terminals 4 Signal Terminals, as two pairs
Cable Screen Terminal..... Single output cable screen terminal

Dimensions

Overall Dimensions (H x W x D) / Weight..... 35mm x 61mm x 117mm / 0.1 kg
Two of the RJ45 cables will overhang the end of the BOA, adding approximately 50mm to the effective length

Environmental

Temperature -20°C to +50°C (storage and operation)
Humidity Range..... 0% to 93% non-condensing

PART NUMBERS

PRODUCT PART NUMBERS

BOA02..... RJ45 DIN TERMINAL BREAKOUT ADAPTOR – FOUR PORT – STRAIGHT THROUGH



This equipment is designed and manufactured to conform to the following EU Directives:

Electromagnetic Compatibility (EMC): 2014/30/EU
Low Voltage: 2014/35/EU
Restriction of Hazardous Substances (RoHS): 2011/65/EU

Manufacturer
Application Solutions (Safety and Security) Limited
Unit 17 Cliffe Industrial Estate
Lewes - East Sussex
BN8 6JL - UK

Tel: +44(0)1273 405411

Fax: +44(0)1273 405415

www.asl-control.co.uk



Assessed to ISO 9001

LPCB Cert No: C1043

All rights reserved.

Information contained in this document is believed to be accurate, however no representation or warranty is given and Application Solutions (Safety and Security) Limited assumes no liability with respect to the accuracy of such information.